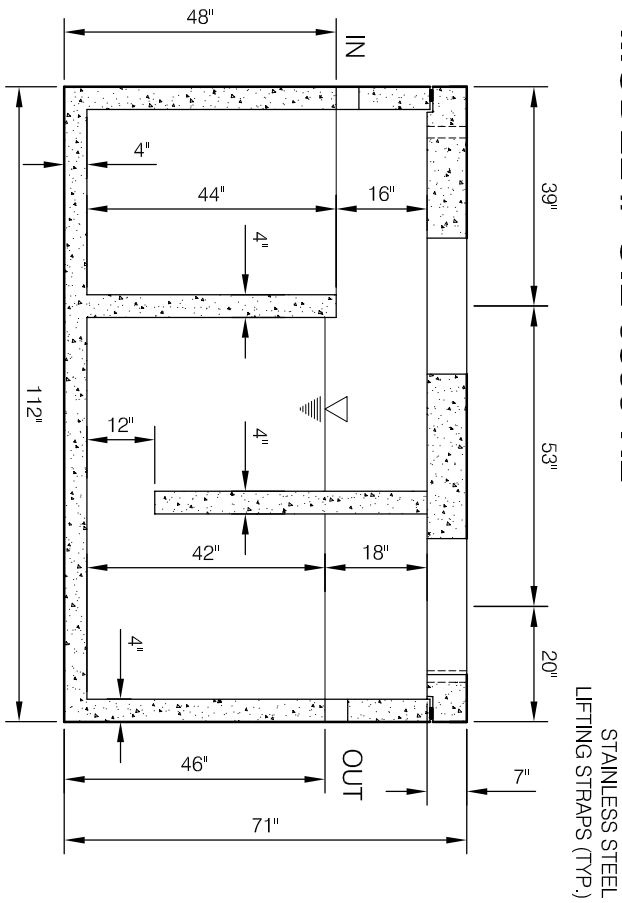
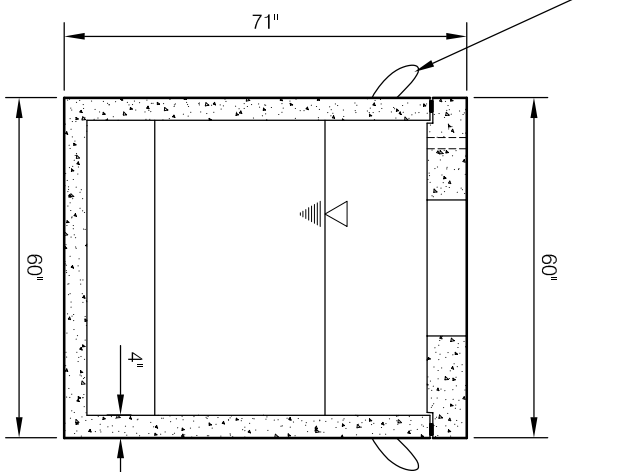


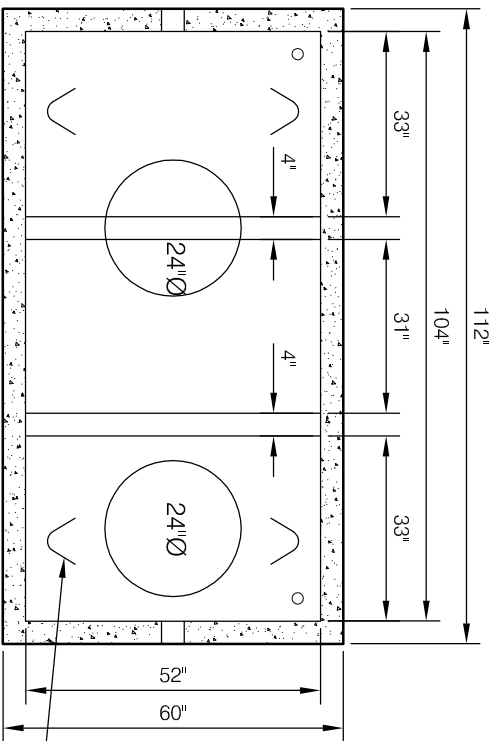
# MODEL # OIL-0800-H2



**SECTION VIEW**



**SIDE VIEW**



**TOP VIEW**

## Design Data

1st COMP	- 800 Imp Gal
TOTAL VOLUME	- 800 Imp Gal
DRAW DOWN	- 17.3 Imp Gal/in
GASKET	- 1" Conseal
FLOW RATE	- 50 GPM
SLUDGE CAPACITY	- 12.95 ft <sup>3</sup>
	- 0.366 m <sup>3</sup>
RECOMMENDED OIL STORAGE	- 22.5 Imp Gal
	- 1022 L

## Concrete Strength

30mpa @ 28 days.  
USE IN SULPHATE & NON SULPHATE SOILS.

## Dimensions

WIDTH:	60"
LENGTH:	112"
HEIGHT:	64"
INLET:	48"
OUTLET:	46"



A Division of Northern Vac Services Ltd.  
4665 Collier Place  
Williams Lake, B.C., V2G-5E0  
Phone: (250) 392-3169  
Fax: (250) 392-3176  
www.grossopecast.com



A Subsidiary of Northern Vac Services Ltd.  
P.O. Box 6868  
Fort St. John, B.C., V1J-4J3  
Phone: (250) 785-3882  
Fax: (250) 785-3881  
Email: nvac@straw.ca

**800-GAL (3632 litres)**  
**3-COMP OIL INTERCEPTOR H-20**  
**LID 4,040 lbs: TANK 9,000 lbs:**  
**TOTAL 13,040 lbs**

Drawn:	DT	Dwg No.:	170
Date:	February 18 / 2012	Cert #:	296
		Rev:	0

STANDARD LIDS ARE RATED FOR 1.0m OF COVER WITH A SAFETY FACTOR OF 2:1. DEEPER BURIAL REQUIRES CONSULTATION BY GROSSO PRE-CAST.