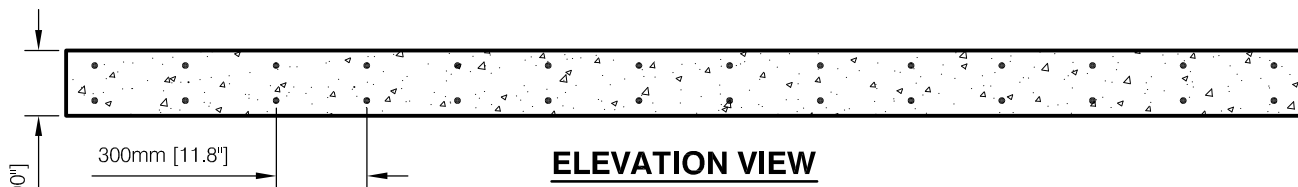
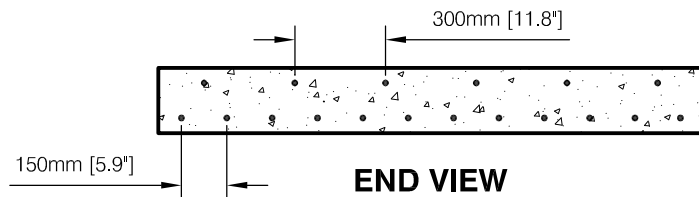


PLAN VIEW



ELEVATION VIEW



END VIEW

REBAR DETAIL:

- 15M REBAR ON 6" W x 12" L
- 15M REBAR ON 12" CENTERS TO CAGE
- DOUBLE CAGE OFFSET TO CRETA 6" x 6" GRID

- NOT TO SCALE
- MIN. 30MPa CONCRETE STRENGTH @ 28 DAYS
- 4 to 6% ENTRAINED AIR

- 1 GALVANIZED LIFTING HOOKS WITH 5x SAFETY RATING



A Subsidiary of Northern Vac Services Ltd.
 P.O. Box 6868
 Fort St. John, B.C., V1J-4J3
 Phone: (250) 785-3382
 Fax: (250) 785-3381
 Email: nvac@shaw.ca

H2O STANDARD LID DETAIL

Drawn:	DVT	Cert #	---	Dwg No.	---
Date:	December 2015		---	Rev:	0



A Division of Northern Vac Services Ltd.
 4665 Collier Place
 Williams Lake, B.C., V2G-5E0
 Phone: (250) 392-3169
 Fax: (250) 392-3176
 Web: www.grossoprecast.com