

CONSTRUCTION SPECIFICATIONS:

CONCRETE PROPERTIES

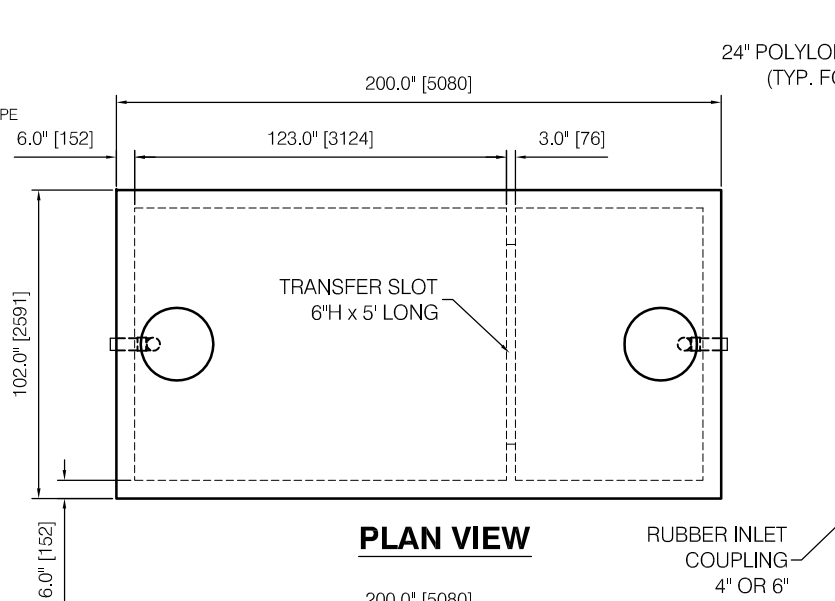
- 4500 PSI (32 MPa) MINIMUM STRENGTH
- 6-8% AIR ENTRAINMENT
- RISER COVER MAY BE USED WITH EXTENSIONS
- PLASTIC INLET AND OUTLET BAFFLE
- INLET AND OUTLET POLYSEALS ACCEPT 4" OR 6" ABS OR PVC PIPE
- DIMENSIONS IN INCHES AND (mm)
- MEETS CSA-B66-05
- REINFORCING MEETS : G30.14.M1983
- : ASTM C1116 TYPE III

MATERIALS

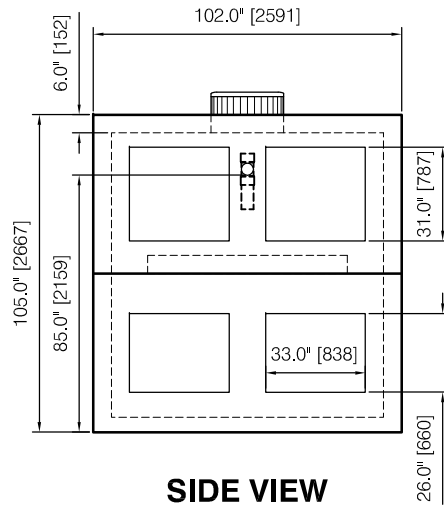
CONCRETE: TYPE 10 PORTLAND, 32 MPa AT 28 DAYS
STANDARD SEE B66-05 SECTION 5

NOTES:

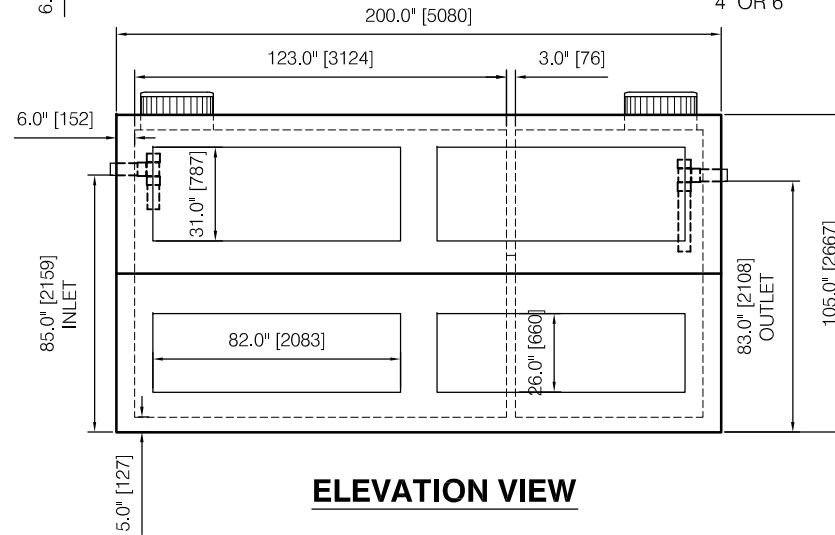
1. DELIVERY IS MADE BY CRANE EQUIPPED TRUCKS. EXCAVATION SHOULD BE 1FT LARGER THAN TANK MIN. DIMENSIONS AND BE ACCESSIBLE FOR UNLOADING FROM THE REAR OF THE TRUCK. MINIMUM OVERHEAD CLEARANCE OF 18FT IS REQUIRED
2. FOR INSTALLATION INSTRUCTIONS, REFER TO CSA AND STANDARD PRACTICES MANUALS.



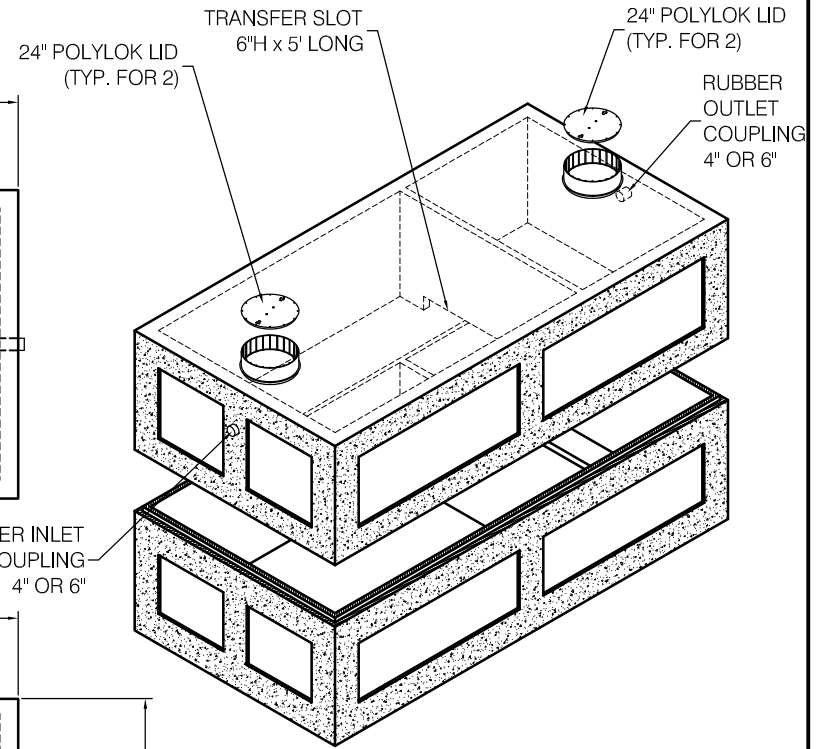
PLAN VIEW



SIDE VIEW



ELEVATION VIEW



ISOMETRIC VIEW

WEIGHT: 49,308 LBS
22,403 Kg



A Subsidiary of Northern Vac Services Ltd.

P.O. Box 6868
Fort St. John, B.C., V1J-4J3
Phone: (250) 785-3382
Fax: (250) 785-3381
Email: nvac@shaw.ca

Project:

**5000 GALLON (22700 LITRES)
2 CHAMBER SEPTIC TANK**

Drawn:	DVT	Checked by:	CL	Dwg No.	--
Date:	Feb. 2016	Cert #	--	Rev:	0



A Division of Northern Vac Services Ltd.

4665 Collier Place
Williams Lake, B.C., V2G-5E0
Phone: (250) 392-3169
Fax: (250) 392-3176
Web: www.grosso-precast.com