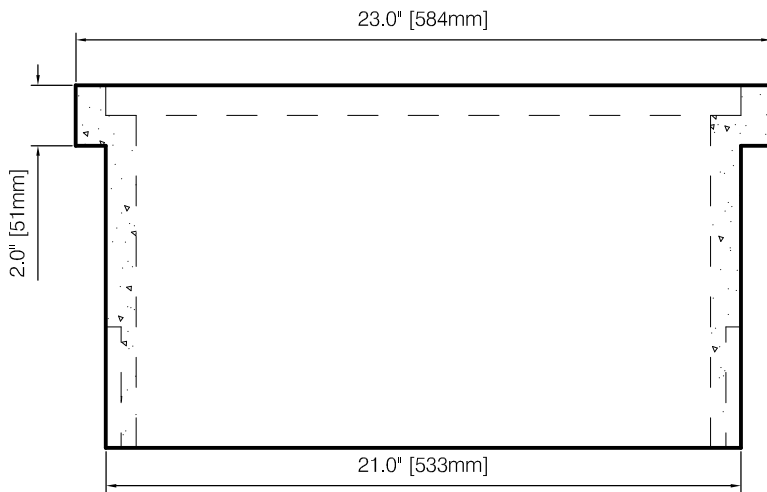


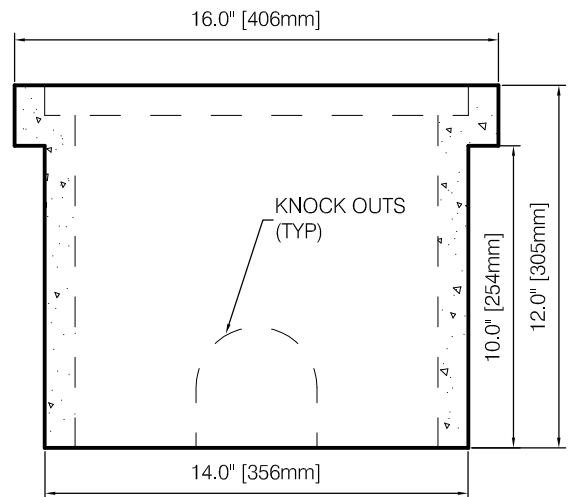
**PLAN VIEW**

**Concrete Strength**

- 30 MPa TYPE 10 @ 28 days
- REINFORCED WITH FIBREMESH
- WALL THICKNESS 1"
- LID AVAILABLE IN CONCRETE, SLOTTED CAST IRON OR SOLID CAST IRON



**FRONT VIEW**



**SIDE VIEW**



A Subsidiary of Northern Vac Services Ltd.  
 P.O. Box 6868  
 Fort St. John, B.C., V1J-4J3  
 Phone: (250) 785-3382  
 Fax: (250) 785-3381  
 Email: nvac@shaw.ca

**BROOKS BOX**

Drawn:	DVT	Cert #	---	Dwg No.	---
Date:	February 2016		---	Rev:	0



A Division of Northern Vac Services Ltd.  
 4665 Collier Place  
 Williams Lake, B.C., V2G-5E0  
 Phone: (250) 392-3169  
 Fax: (250) 392-3176  
 Web: www.grossoprecast.com